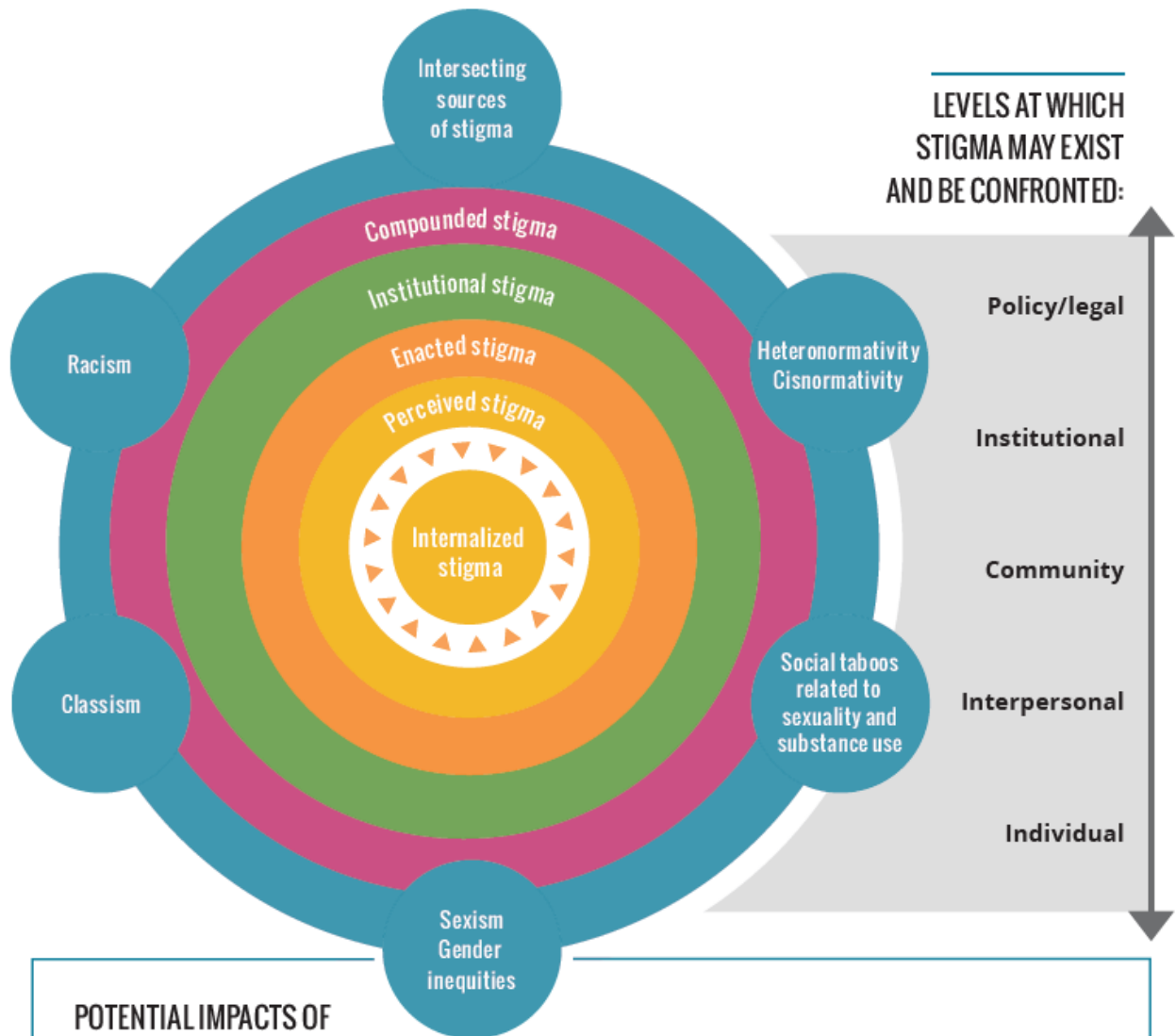


# STIGMA DEFINED



## POTENTIAL IMPACTS OF STBBI-RELATED STIGMA:

- adoption of unhealthy behaviours
- fear of disclosure
- limited uptake of available STBBI-related services
- inappropriate planning and implementation of STBBI prevention and support programs

Adapted from:

Churcher S. Stigma related to HIV and AIDS as a barrier to accessing health care in Thailand: A review of recent literature. *WHO South-East Asia J Public Health* 2013;2:12-22.

Loutfy MR, Logie CH, Zhang Y et al. Gender and ethnicity differences in HIV-related stigma experienced by people living with HIV in Ontario, Canada. *PLoS ONE* 2012;7(12):e48168.

Stangl A, Brady L, Fritz K. *Measuring HIV stigma and discrimination*. Strive, 2012. Available at: [http://strive.lshtm.ac.uk/sites/strive.lshtm.ac.uk/files/STRIVE\\_stigma%20brief-A3.pdf](http://strive.lshtm.ac.uk/sites/strive.lshtm.ac.uk/files/STRIVE_stigma%20brief-A3.pdf).

